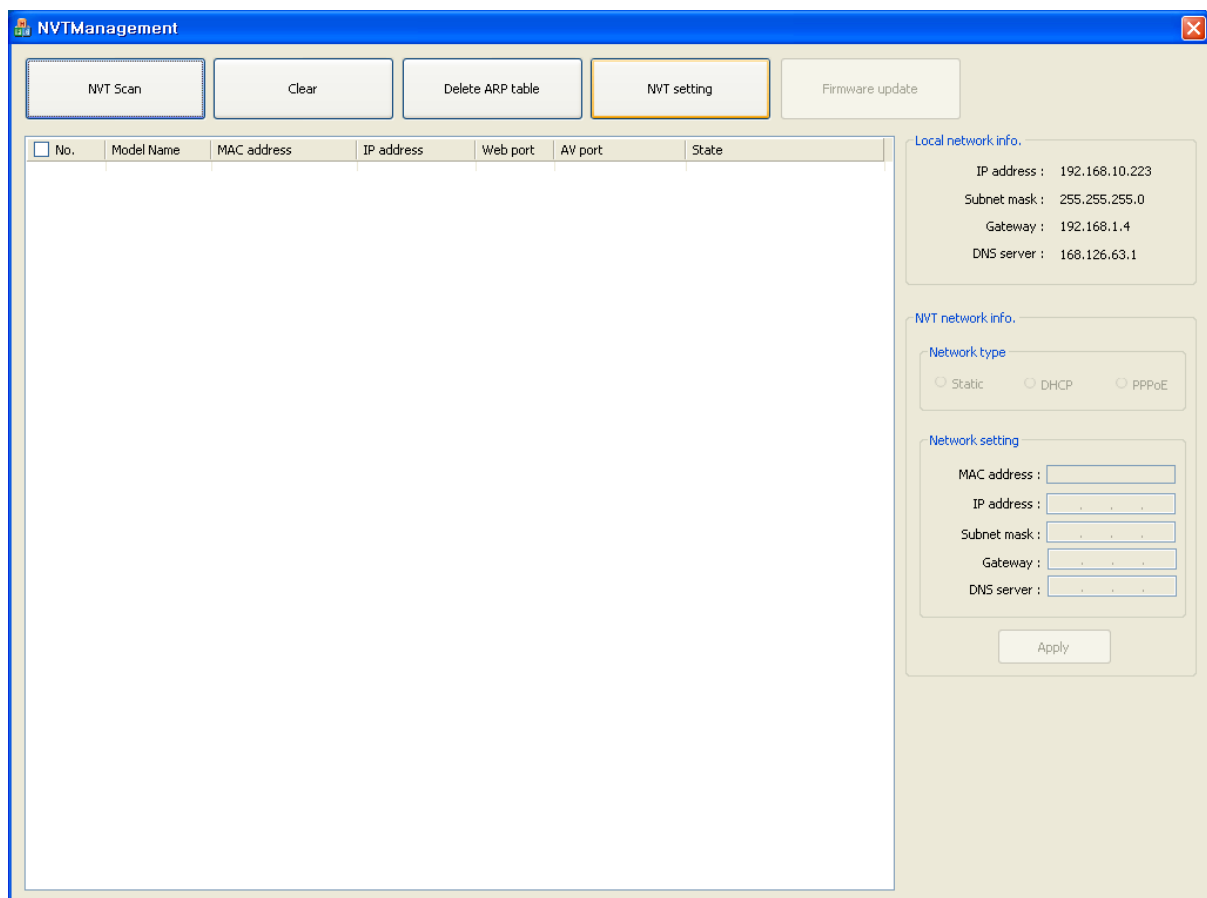


# NVTManagement

ver. 1.0.0.1

## Overview

- Double-click 'NVTManagement.exe' to Run the program
1. Scanning the NVT (Network Video Transmitter) that are connected to the local network
  2. Changing the selected NVT network setting information



< NVTManagement – Initial Page >

## Button

- "NVT Scan" button: scanning the NVTs that are connected to the local network
- "Clear" button: clearing the list of the scanned NVTs
- "Delete ARP table" button: deleting the MAC and IP address tables on the PC  
(Use in case that it is required to delete the tables that the PC manages after changing the NVT information)
- "NVT setting" button: changing the information of the selected NVTs (two or more)

## 1. NVT scan

- "NVT Scan" button: scanning the NVT that are connected to the local network
- "Clear" button: clearing the list of the scanned NVTs
- Sorting function: click the tab (Model Name, MAC address, IP address, Web port, A/V port)

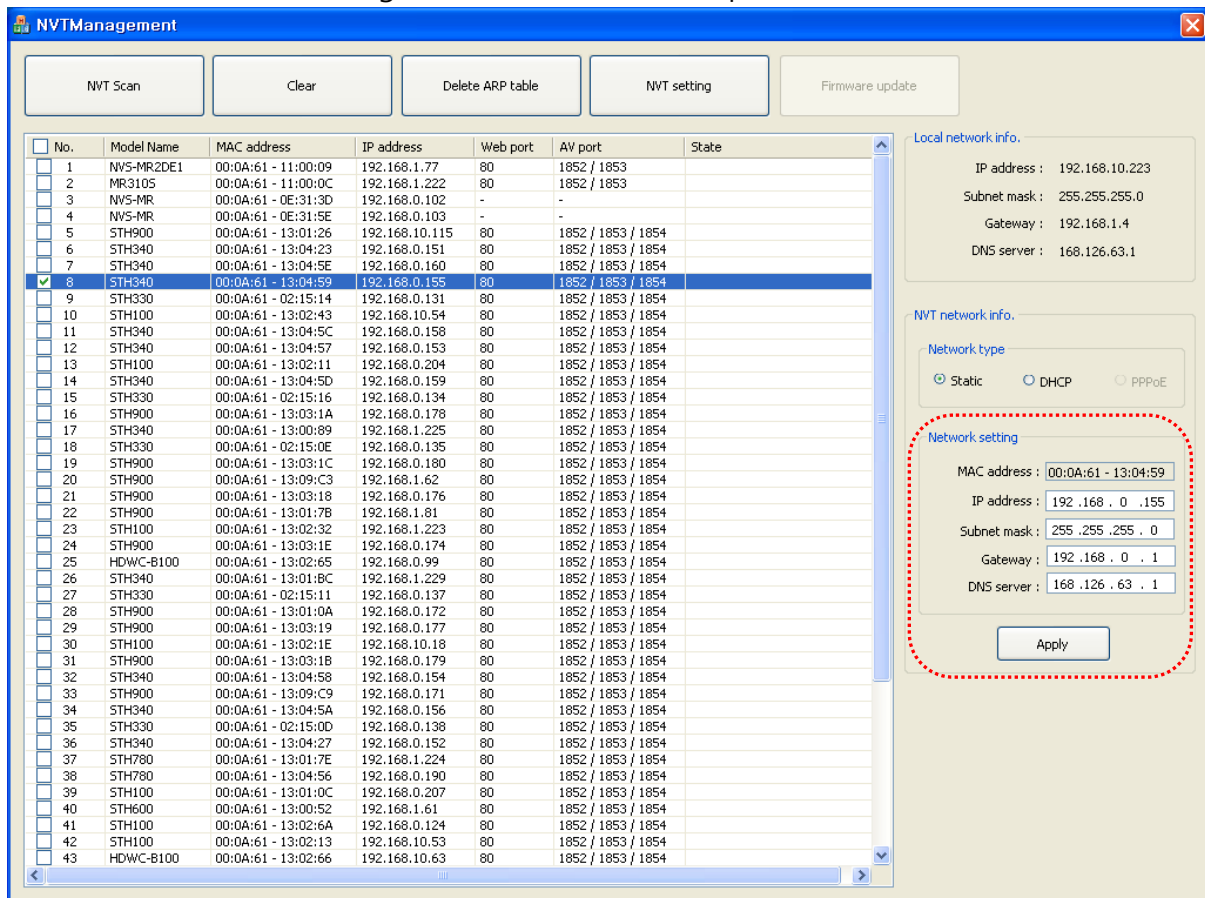
The screenshot displays the NVTManagement application window. At the top, there are five buttons: "NVT Scan", "Clear", "Delete ARP table", "NVT setting", and "Firmware update". Below these buttons is a table listing scanned NVTs. The table has columns for No., Model Name, MAC address, IP address, Web port, AV port, and State. The table contains 43 rows of data. To the right of the table, there are two panels: "Local network info." and "NVT network info.". The "Local network info." panel shows IP address: 192.168.10.223, Subnet mask: 255.255.255.0, Gateway: 192.168.1.4, and DNS server: 168.126.63.1. The "NVT network info." panel has a "Network type" section with radio buttons for Static, DHCP, and PPPoE. Below that is a "Network setting" section with input fields for MAC address, IP address, Subnet mask, Gateway, and DNS server, and an "Apply" button.

No.	Model Name	MAC address	IP address	Web port	AV port	State
1	NVS-MR2DE1	00:0A:61 - 11:00:09	192.168.1.77	80	1852 / 1853	
2	MR3105	00:0A:61 - 11:00:0C	192.168.1.222	80	1852 / 1853	
3	NVS-MR	00:0A:61 - 0E:31:3D	192.168.0.102	-	-	
4	NVS-MR	00:0A:61 - 0E:31:5E	192.168.0.103	-	-	
5	STH900	00:0A:61 - 13:01:26	192.168.10.115	80	1852 / 1853 / 1854	
6	STH340	00:0A:61 - 13:04:23	192.168.0.151	80	1852 / 1853 / 1854	
7	STH340	00:0A:61 - 13:04:5E	192.168.0.160	80	1852 / 1853 / 1854	
8	STH340	00:0A:61 - 13:04:59	192.168.0.155	80	1852 / 1853 / 1854	
9	STH330	00:0A:61 - 02:15:14	192.168.0.131	80	1852 / 1853 / 1854	
10	STH100	00:0A:61 - 13:02:43	192.168.10.54	80	1852 / 1853 / 1854	
11	STH340	00:0A:61 - 13:04:5C	192.168.0.158	80	1852 / 1853 / 1854	
12	STH340	00:0A:61 - 13:04:57	192.168.0.153	80	1852 / 1853 / 1854	
13	STH100	00:0A:61 - 13:02:11	192.168.0.204	80	1852 / 1853 / 1854	
14	STH340	00:0A:61 - 13:04:5D	192.168.0.159	80	1852 / 1853 / 1854	
15	STH330	00:0A:61 - 02:15:16	192.168.0.134	80	1852 / 1853 / 1854	
16	STH900	00:0A:61 - 13:03:1A	192.168.0.178	80	1852 / 1853 / 1854	
17	STH340	00:0A:61 - 13:00:89	192.168.1.225	80	1852 / 1853 / 1854	
18	STH330	00:0A:61 - 02:15:0E	192.168.0.135	80	1852 / 1853 / 1854	
19	STH900	00:0A:61 - 13:03:1C	192.168.0.180	80	1852 / 1853 / 1854	
20	STH900	00:0A:61 - 13:09:C3	192.168.1.62	80	1852 / 1853 / 1854	
21	STH900	00:0A:61 - 13:03:18	192.168.0.176	80	1852 / 1853 / 1854	
22	STH900	00:0A:61 - 13:01:7B	192.168.1.81	80	1852 / 1853 / 1854	
23	STH100	00:0A:61 - 13:02:32	192.168.1.223	80	1852 / 1853 / 1854	
24	STH900	00:0A:61 - 13:03:1E	192.168.0.174	80	1852 / 1853 / 1854	
25	HDWC-B100	00:0A:61 - 13:02:65	192.168.0.99	80	1852 / 1853 / 1854	
26	STH340	00:0A:61 - 13:01:BC	192.168.1.229	80	1852 / 1853 / 1854	
27	STH330	00:0A:61 - 02:15:11	192.168.0.137	80	1852 / 1853 / 1854	
28	STH900	00:0A:61 - 13:01:0A	192.168.0.172	80	1852 / 1853 / 1854	
29	STH900	00:0A:61 - 13:03:19	192.168.0.177	80	1852 / 1853 / 1854	
30	STH100	00:0A:61 - 13:02:1E	192.168.10.18	80	1852 / 1853 / 1854	
31	STH900	00:0A:61 - 13:03:1B	192.168.0.179	80	1852 / 1853 / 1854	
32	STH340	00:0A:61 - 13:04:58	192.168.0.154	80	1852 / 1853 / 1854	
33	STH900	00:0A:61 - 13:09:C9	192.168.0.171	80	1852 / 1853 / 1854	
34	STH340	00:0A:61 - 13:04:5A	192.168.0.156	80	1852 / 1853 / 1854	
35	STH330	00:0A:61 - 02:15:0D	192.168.0.138	80	1852 / 1853 / 1854	
36	STH340	00:0A:61 - 13:04:27	192.168.0.152	80	1852 / 1853 / 1854	
37	STH780	00:0A:61 - 13:01:7E	192.168.1.224	80	1852 / 1853 / 1854	
38	STH780	00:0A:61 - 13:04:56	192.168.0.190	80	1852 / 1853 / 1854	
39	STH100	00:0A:61 - 13:01:0C	192.168.0.207	80	1852 / 1853 / 1854	
40	STH600	00:0A:61 - 13:00:52	192.168.1.61	80	1852 / 1853 / 1854	
41	STH100	00:0A:61 - 13:02:6A	192.168.0.124	80	1852 / 1853 / 1854	
42	STH100	00:0A:61 - 13:02:13	192.168.10.53	80	1852 / 1853 / 1854	
43	HDWC-B100	00:0A:61 - 13:02:66	192.168.10.63	80	1852 / 1853 / 1854	

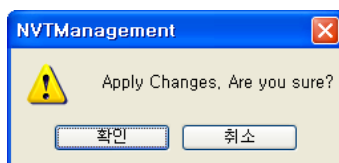
< NVTManagement – Scanning >

## 2. NVT network setting information change

- Selecting an NVT: click an NVT out of the scanned NVTs
- Changing the information: change the network information on the part "Network Setting" (Red dot range)
- "Apply" button: click the button after finishing
- Click the button "OK" on the Confirmation Dialog Box and type the ID and password on the Authentication Dialog Box (Initial value: root / pass)



< NVTManagement – Selecting >



< Confirmation Dialog Box – Network information change >

Authentication

User ID :

Password :

OK

Cancel

< Authentication Dialog Box - Network information change >

NVTManagement

NVT Scan

Clear

Delete ARP table

NVT setting

Firmware update

No.	Model Name	MAC address	IP address	Web port	AV port	State
1	HDWC-B100	00:0A:61-13:02:66	192.168.10.63	80	1852 / 1853 / 1854	
2	STH100	00:0A:61-13:02:43	192.168.10.54	80	1852 / 1853 / 1854	
3	STH100	00:0A:61-13:02:13	192.168.10.53	80	1852 / 1853 / 1854	
4	MR310	00:0A:61-0E:54:84	192.168.10.253	80	1852 / 1853 / 1854	
5	STH100	00:0A:61-13:02:1E	192.168.10.18	80	1852 / 1853 / 1854	
6	STH900	00:0A:61-13:01:26	192.168.10.115	80	1852 / 1853 / 1854	
7	MR780	00:0A:61-11:00:2F	192.168.1.86	80	1852 / 1853	
8	MR900S	00:0A:61-0E:0E:4F	192.168.1.83	80	1852 / 1853	
9	STH900	00:0A:61-13:01:7B	192.168.1.81	80	1852 / 1853 / 1854	
10	NVS-MR2DE1	00:0A:61-11:00:09	192.168.1.77	80	1852 / 1853	
11	STH900	00:0A:61-13:09:C3	192.168.1.62	80	1852 / 1853 / 1854	
12	STH600	00:0A:61-13:00:52	192.168.1.61	80	1852 / 1853 / 1854	
13	MRH100	00:0A:61-0E:21:88	192.168.1.58	80	1852 / 1853 / 1854	
14	HSDC-101NH	00:0A:61-0E:5F:6A	192.168.1.57	80	1852 / 1853 / 1854	
15	NVS-MRDE1	00:0A:61-12:12:8A	192.168.1.39	80	1852 / 1853	
16	STH340	00:0A:61-13:01:8C	192.168.1.229	80	1852 / 1853 / 1854	
17	HSDC-101NH	00:0A:61-0E:22:76	192.168.1.228	88	8852 / 8853 / 1854	
18	STH330	00:0A:61-02:15:19	192.168.1.226	86	6852 / 6853 / 1854	
19	STH340	00:0A:61-13:00:89	192.168.1.225	80	1852 / 1853 / 1854	
20	STH780	00:0A:61-13:01:7E	192.168.1.224	80	1852 / 1853 / 1854	
21	STH100	00:0A:61-13:02:32	192.168.1.223	80	1852 / 1853 / 1854	
22	MR310S	00:0A:61-11:00:0C	192.168.1.222	80	1852 / 1853	Checking ip address ...
23	HDWC-B100	00:0A:61-13:02:65	192.168.0.99	80	1852 / 1853 / 1854	
24	STH100	00:0A:61-13:01:0C	192.168.0.207	80	1852 / 1853 / 1854	
25	STH100	00:0A:61-13:02:11	192.168.0.204	80	1852 / 1853 / 1854	
26	STH100	00:0A:61-13:02:45	192.168.0.203	80	1852 / 1853 / 1854	
27	STH100	00:0A:61-13:02:44	192.168.0.202	80	1852 / 1853 / 1854	
28	STH780	00:0A:61-13:04:56	192.168.0.190	80	1852 / 1853 / 1854	
29	STH900	00:0A:61-13:03:1C	192.168.0.180	80	1852 / 1853 / 1854	
30	STH900	00:0A:61-13:03:1B	192.168.0.179	80	1852 / 1853 / 1854	
31	STH900	00:0A:61-13:03:1A	192.168.0.178	80	1852 / 1853 / 1854	
32	STH900	00:0A:61-13:03:19	192.168.0.177	80	1852 / 1853 / 1854	
33	STH900	00:0A:61-13:03:18	192.168.0.176	80	1852 / 1853 / 1854	
34	STH900	00:0A:61-13:03:17	192.168.0.175	80	1852 / 1853 / 1854	
35	STH900	00:0A:61-13:03:1E	192.168.0.174	80	1852 / 1853 / 1854	
36	STH900	00:0A:61-13:01:0A	192.168.0.172	80	1852 / 1853 / 1854	
37	STH900	00:0A:61-13:09:C9	192.168.0.171	80	1852 / 1853 / 1854	
38	STH340	00:0A:61-13:04:5E	192.168.0.160	80	1852 / 1853 / 1854	
39	STH340	00:0A:61-13:04:5D	192.168.0.159	80	1852 / 1853 / 1854	
40	STH340	00:0A:61-13:04:5C	192.168.0.158	80	1852 / 1853 / 1854	
41	STH340	00:0A:61-13:04:5A	192.168.0.156	80	1852 / 1853 / 1854	
42	STH340	00:0A:61-13:04:59	192.168.0.155	80	1852 / 1853 / 1854	
43	STH340	00:0A:61-13:04:58	192.168.0.154	80	1852 / 1853 / 1854	

Local network info.

IP address :

192.168.10.223

Subnet mask :

255.255.255.0

Gateway :

192.168.1.4

DNS server :

168.126.63.1

NVT network info.

Network type

Static

DHCP

PPPoE

Network setting

MAC address :

00:0A:61-11:00:0C

IP address :

192.168.1.222

Subnet mask :

255.255.255.0

Gateway :

192.168.1.4

DNS server :

168.126.63.1

Apply

< NVTManagement – Network information change message (state tab) >

The screenshot displays the NVTManagement application window. At the top, there are buttons for 'NVT Scan', 'Clear', 'Delete ARP table', 'NVT setting', and 'Firmware update'. Below these is a table listing various NVTs with columns for No., Model Name, MAC address, IP address, Web port, AV port, and State. The table contains 43 entries. To the right of the table, there are two panels: 'Local network info.' showing IP address, Subnet mask, Gateway, and DNS server; and 'NVT network info.' with 'Network type' (Static, DHCP, PPPoE) and 'Network setting' (MAC address, IP address, Subnet mask, Gateway, DNS server) fields. An 'Apply' button is at the bottom of the NVT network info. panel.

No.	Model Name	MAC address	IP address	Web port	AV port	State
1	HDWC-B100	00:0A:61-13:02:66	192.168.10.63	80	1852 / 1853 / 1854	
2	STH100	00:0A:61-13:02:43	192.168.10.54	80	1852 / 1853 / 1854	
3	STH100	00:0A:61-13:02:13	192.168.10.53	80	1852 / 1853 / 1854	
4	MR310	00:0A:61-0E:54:84	192.168.10.253	80	1852 / 1853 / 1854	
5	STH100	00:0A:61-13:02:1E	192.168.10.18	80	1852 / 1853 / 1854	
6	STH900	00:0A:61-13:01:26	192.168.10.115	80	1852 / 1853 / 1854	
7	MR780	00:0A:61-11:00:2F	192.168.1.86	80	1852 / 1853	
8	MR9005	00:0A:61-0E:0E:4F	192.168.1.83	80	1852 / 1853	
9	STH900	00:0A:61-13:01:7B	192.168.1.81	80	1852 / 1853 / 1854	
10	NVS-MR2DE1	00:0A:61-11:00:09	192.168.1.77	80	1852 / 1853	
11	STH900	00:0A:61-13:09:C3	192.168.1.62	80	1852 / 1853 / 1854	
12	STH600	00:0A:61-13:00:52	192.168.1.61	80	1852 / 1853 / 1854	
13	MRH100	00:0A:61-0E:21:88	192.168.1.58	80	1852 / 1853 / 1854	
14	HSDC-101NH	00:0A:61-0E:5F:6A	192.168.1.57	80	1852 / 1853 / 1854	
15	NVS-MRDE1	00:0A:61-12:12:BA	192.168.1.39	80	1852 / 1853	
16	MR340	00:0A:61-13:01:8C	192.168.1.229	80	1852 / 1853 / 1854	
17	HSDC-101NH	00:0A:61-0E:22:76	192.168.1.228	88	8852 / 8853 / 1854	
18	STH330	00:0A:61-02:15:19	192.168.1.226	86	6852 / 6853 / 1854	
19	STH340	00:0A:61-13:00:89	192.168.1.225	80	1852 / 1853 / 1854	
20	STH780	00:0A:61-13:01:7E	192.168.1.224	80	1852 / 1853 / 1854	
21	STH100	00:0A:61-13:02:32	192.168.1.223	80	1852 / 1853 / 1854	
22	MR310S	00:0A:61-11:00:0C	192.168.1.222	80	1852 / 1853	IP address has changed, IP ad..
23	HDWC-B100	00:0A:61-13:02:65	192.168.0.99	80	1852 / 1853 / 1854	
24	STH100	00:0A:61-13:01:0C	192.168.0.207	80	1852 / 1853 / 1854	
25	STH100	00:0A:61-13:02:11	192.168.0.204	80	1852 / 1853 / 1854	
26	STH100	00:0A:61-13:02:45	192.168.0.203	80	1852 / 1853 / 1854	
27	STH100	00:0A:61-13:02:44	192.168.0.202	80	1852 / 1853 / 1854	
28	STH780	00:0A:61-13:04:56	192.168.0.190	80	1852 / 1853 / 1854	
29	STH900	00:0A:61-13:03:1C	192.168.0.180	80	1852 / 1853 / 1854	
30	STH900	00:0A:61-13:03:1B	192.168.0.179	80	1852 / 1853 / 1854	
31	STH900	00:0A:61-13:03:1A	192.168.0.178	80	1852 / 1853 / 1854	
32	STH900	00:0A:61-13:03:19	192.168.0.177	80	1852 / 1853 / 1854	
33	STH900	00:0A:61-13:03:18	192.168.0.176	80	1852 / 1853 / 1854	
34	STH900	00:0A:61-13:03:17	192.168.0.175	80	1852 / 1853 / 1854	
35	STH900	00:0A:61-13:03:1E	192.168.0.174	80	1852 / 1853 / 1854	
36	STH900	00:0A:61-13:01:0A	192.168.0.172	80	1852 / 1853 / 1854	
37	STH900	00:0A:61-13:09:C9	192.168.0.171	80	1852 / 1853 / 1854	
38	STH340	00:0A:61-13:04:5E	192.168.0.160	80	1852 / 1853 / 1854	
39	STH340	00:0A:61-13:04:5D	192.168.0.159	80	1852 / 1853 / 1854	
40	STH340	00:0A:61-13:04:5C	192.168.0.158	80	1852 / 1853 / 1854	
41	STH340	00:0A:61-13:04:5A	192.168.0.156	80	1852 / 1853 / 1854	
42	STH340	00:0A:61-13:04:59	192.168.0.155	80	1852 / 1853 / 1854	
43	STH340	00:0A:61-13:04:58	192.168.0.154	80	1852 / 1853 / 1854	

**Local network info.**  
 IP address : 192.168.10.223  
 Subnet mask : 255.255.255.0  
 Gateway : 192.168.1.4  
 DNS server : 168.126.63.1

**NVT network info.**  
**Network type**  
☒ Static ☐ DHCP ☐ PPPoE  
**Network setting**  
 MAC address : 00:0A:61-11:00:0C  
 IP address : 192.168.1.222  
 Subnet mask : 255.255.255.0  
 Gateway : 192.168.1.4  
 DNS server : 168.126.63.1  
 Apply

< NVTManagement – Network information completion message (state tab) >

The technical support of the product provider can be supplied for changing two or more NVTs network setting information by "NVT setting" button.